

# Design Activity Update

- Data collection - on schedule
  - Survey.
  - Geotechnical.
  - Subsurface Utility Exploration (SUE).
  - Environmental.
  - Cultural Resources.

# Design Activity Update



- Update/Refine Hydraulic Model
  - “Truth” bridge, channel and walkway elevations.
  - Update understanding of flood conveyance.
  - Gathering watershed data.
  - On Schedule.

# Design Activity Update

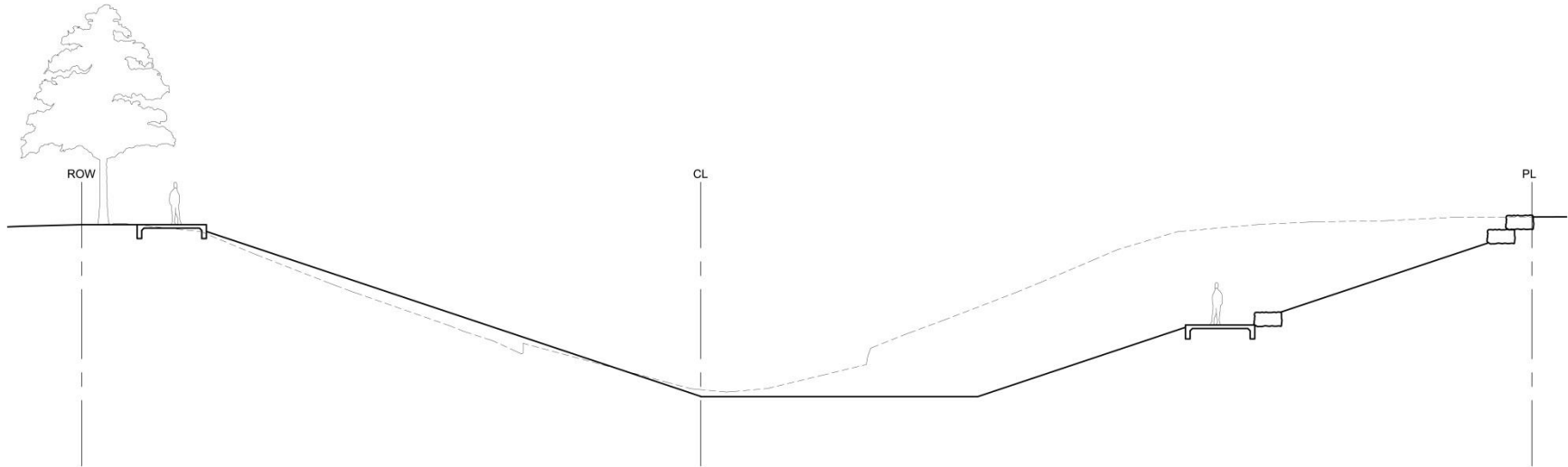


- Gathering record information
  - Drawings and other information.
- Advance physical and architectural concepts
  - Continue civil layout
  - Update architectural cross sections

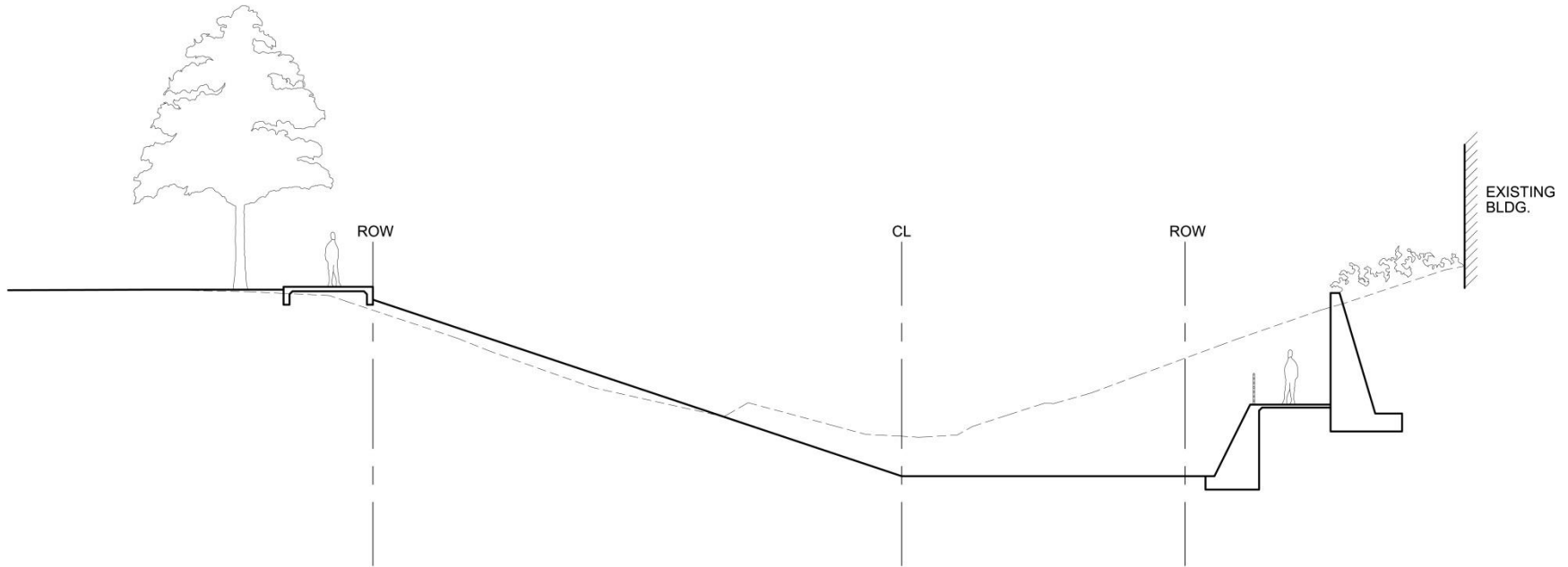
# Lower Reach Area



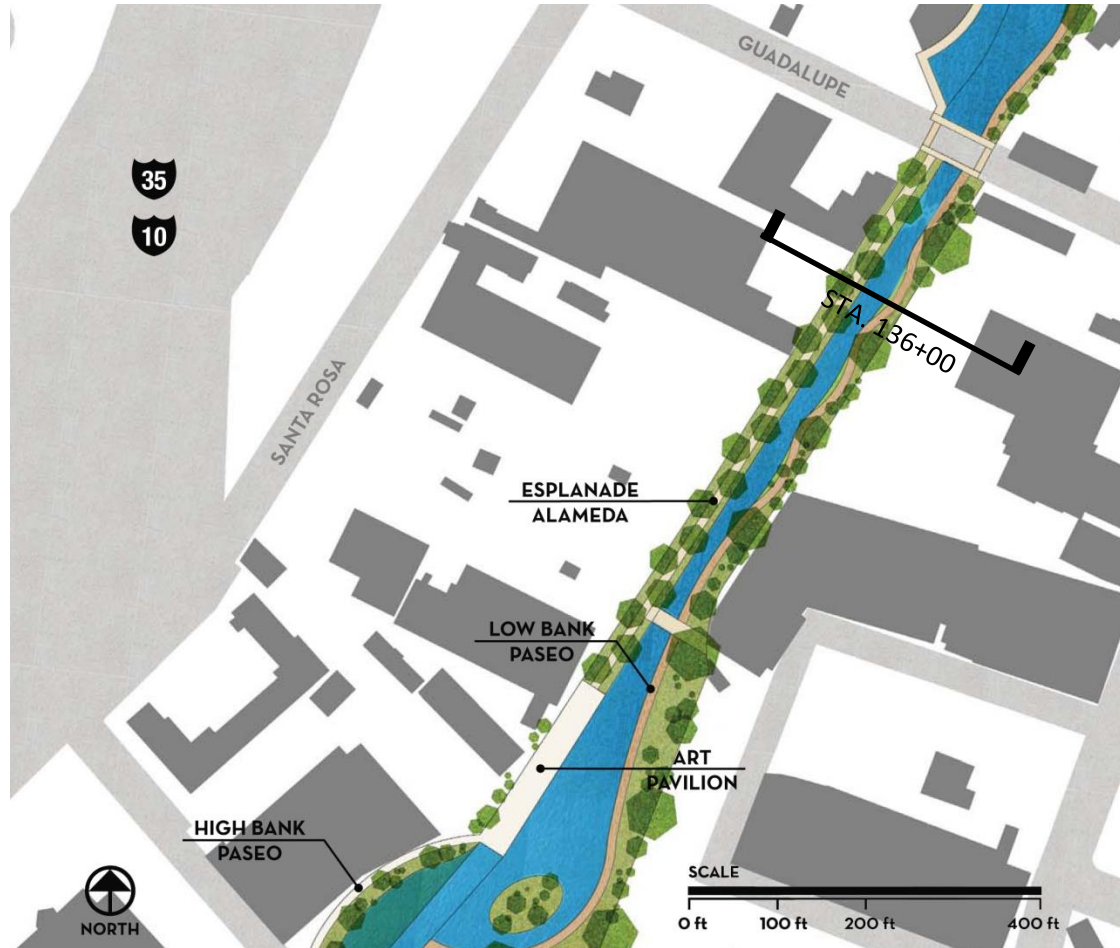
# STA. 104+00



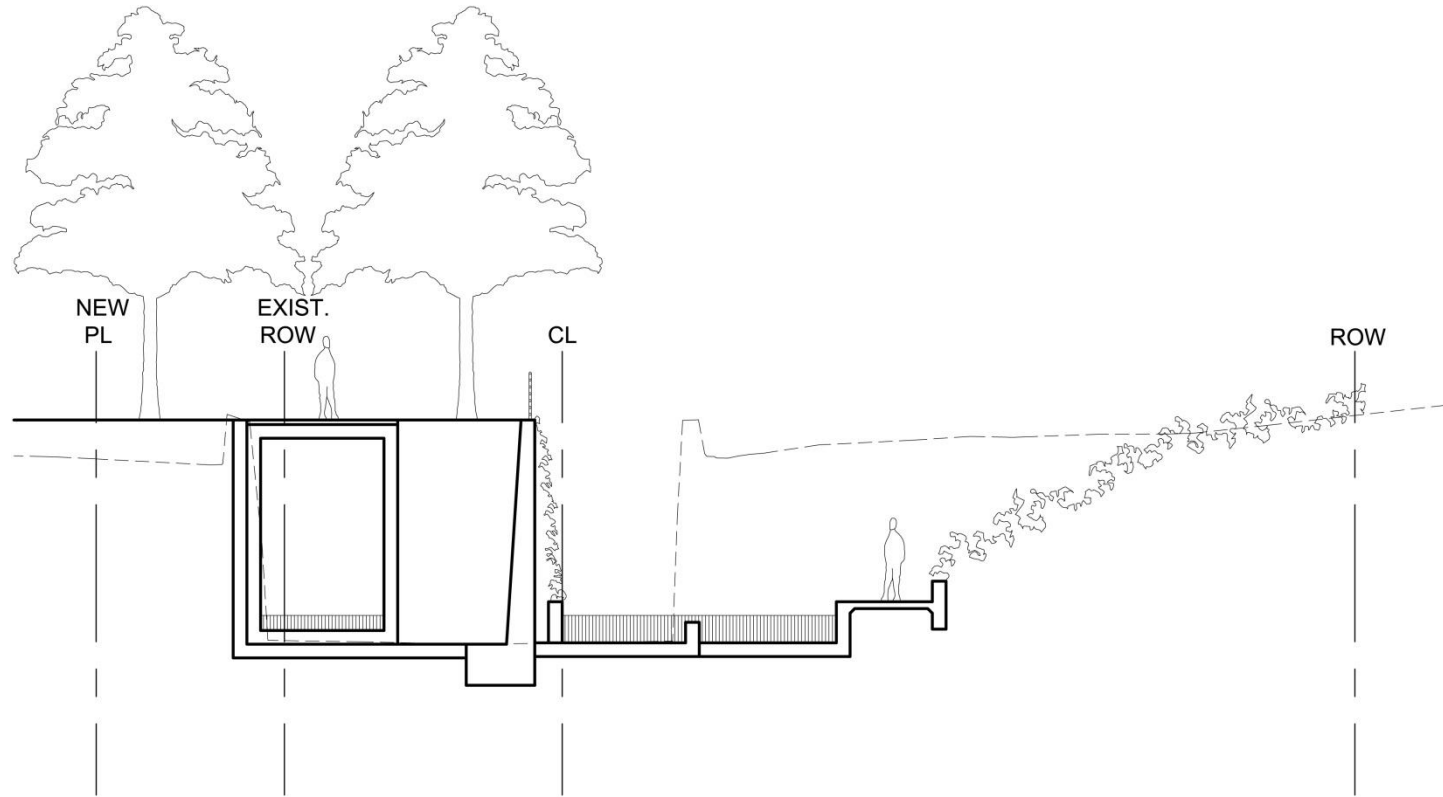
# STA. 116+00



# STA. 136+00

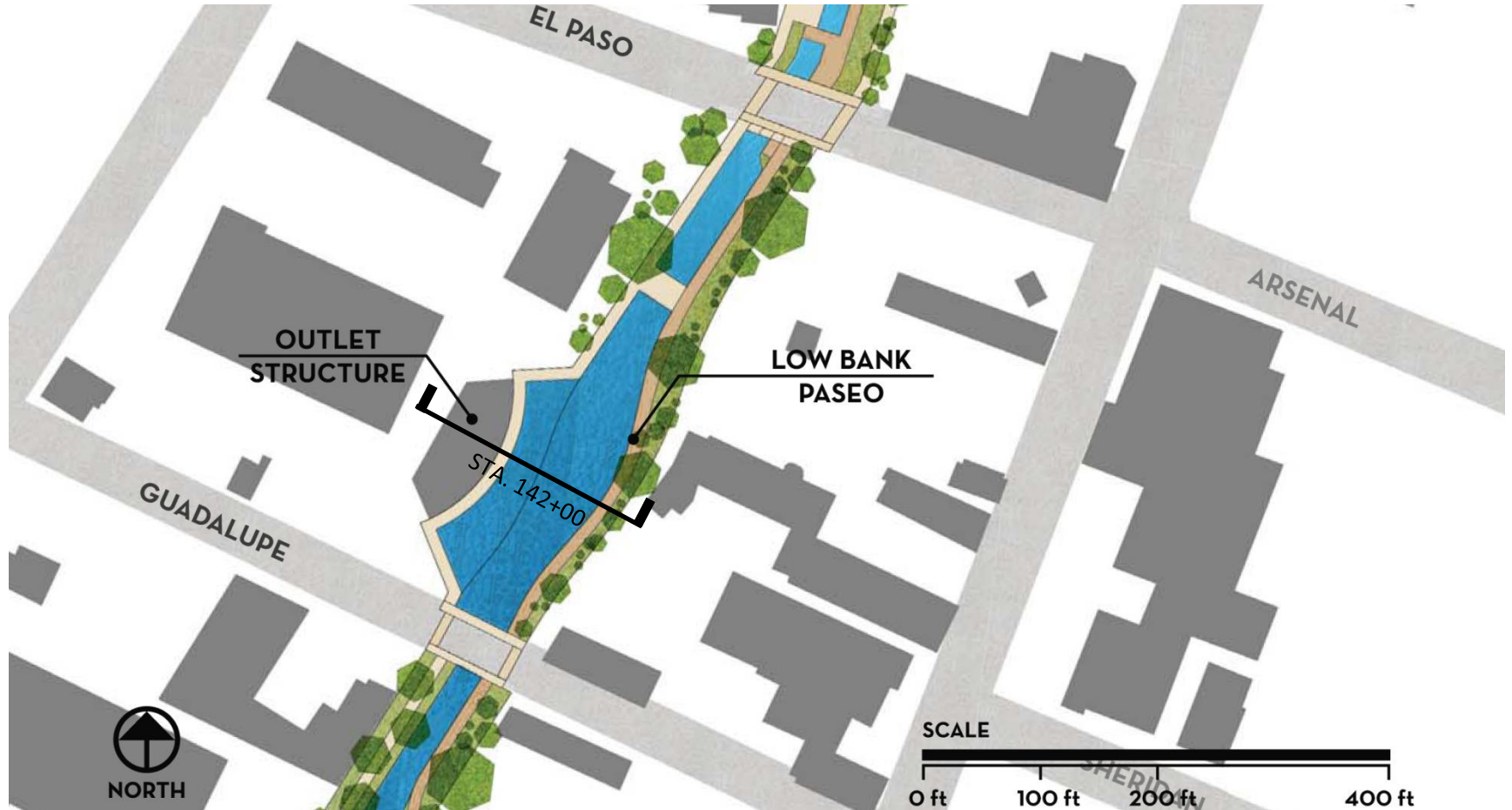


# STA. 136+00

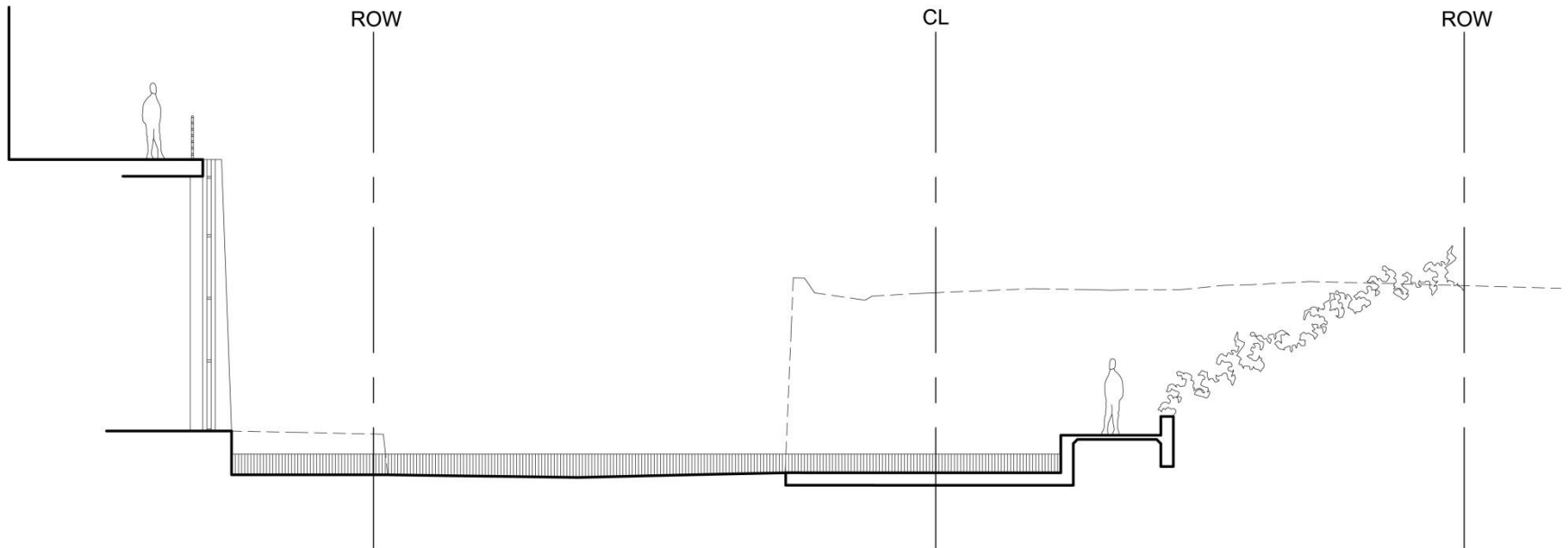




# OUTLET STRUCTURE



# STA. 142+00



# Public Engagement



## UTILIZE THE SAN PEDRO CREEK SUBCOMMITTEE MEETINGS / MEMBERS

SARA/COUNTY REVIEW

JUNE 30 - JULY 4

SPC COMMITTEE

JULY 10

**FIRST WORKSHOP**

**JULY 14 - JULY 18**

SARA/COUNTY REVIEW

SEPT. 1 – SEPT. 5

SPC COMMITTEE

SEPT. 11

**SECOND WORKSHOP**

**SEPT. 15 – SEPT. 19**

SARA/COUNTY REVIEW

NOV. 3 – NOV. 7

SPC COMMITTEE

NOV. 13

**THIRD WORKSHOP**

**NOV. 17 – NOV. 21**

# Public Engagement



## FIRST WORKSHOP – SITE PROGRAMMING

|            |  |
|------------|--|
| OBJECTIVE: | VALIDATE & STRENGTHEN THE CONCEPT  |
| CONTENT:   | DESIGN CONCEPT UPDATED   |
| MATERIALS: | PLANS 1"=20' WITH CULTURAL MAPPING OVERLAYS<br>MODEL SECTIONS<br>MODEL ELEVATIONS<br>COMPARATIVE DESIGN IMAGES<br>HISTORICAL / CULTURAL IMAGES |
| PROCESS:   | CHARETTE   |
| AGENDA:    | 15 MIN. INTRODUCTIONS<br>30 MIN. CONCEPT OVERVIEW<br>60 MIN. FOCUS GROUP WORK<br>30 MIN. REPORTING<br>15 MIN. SUMMARY & NEXT STEPS             |

# Public Engagement



## SECOND WORKSHOP – CHARACTER CONCEPT

OBJECTIVE: REVIEW / COMMENT ON LIGHTING, GRAPHICS, LANDSCAPE & MATERIAL CONCEPTS

## THIRD WORKSHOP – DESIGN CHARACTER

OBJECTIVE: REVIEW / COMMENT ON INTEGRATED DESIGN

# Public Engagement

## CHARACTER AREAS / FOCUS GROUPS

- |                         |                                     |
|-------------------------|-------------------------------------|
| 1. VILLA LAGUNILLA      | SPC MEMBER<br>ARCHITECT<br>ENGINEER |
| 2. ALAMEDA/AGUA ANTIGUA | SPC MEMBER<br>ARCHITECT<br>ENGINEER |
| 3. MERODEO              | SPC MEMBER<br>ARCHITECT<br>ENGINEER |
| 4. CANAL PRINCIPAL      | SPC MEMBER<br>ARCHITECT<br>ENGINEER |
| 5. CAMPO ABAJO          | SPC MEMBER<br>ARCHITECT<br>ENGINEER |
| 6. "LOWER REACH"        | SPC MEMBER<br>ARCHITECT<br>ENGINEER |

END OF PRESENTATION